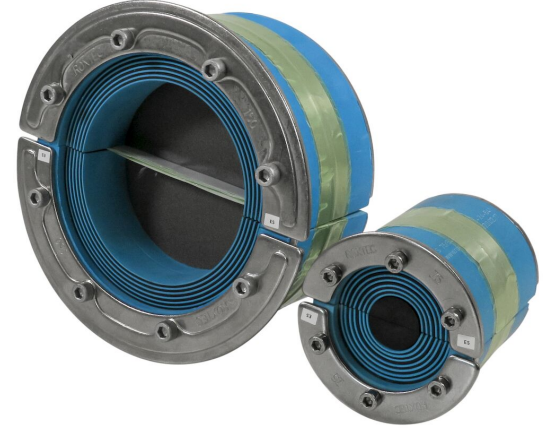




# Roxtec RS EMC yalıtım malzemesi

EMC uygulamalarında tek kablo veya boru için geçiş yalıtım malzemesi.

Roxtec RS EMC, metal manşonlardaki tek kablolar veya borular için tasarlanmış elektromanyetik uyumluluk sağlayan bir yalıtım malzemesidir. Giriş yalıtım malzemesi soyulabilir katmanlı iki yarıdan oluşur ve bu sayede farklı ölçülerdeki kablolar ve borulara uyarlanabilir. Elektromanyetik kalkan için ES sürümü ile iletken bozulmalara karşı koruma sağlayan PE sürümü arasında seçim yapabilirsiniz. Yalıtım malzemesinin tasarımı mevcut kabloların veya boruların etrafına montajını kolaylaştırır. Roxtec EC test çubuğunu, Roxtec BG™ veya ES kablo geçiş montajlarının elektriksel performansını görmek için kullanabilirsiniz.



- Kemirgenlere dayanıklı
- Hızlı ve kolay montaj

## Ürün özellikleri



Yangın sınıflamalı



Su geçirmez



Gaz geçirmez



EMI koruması

## Montaj yapılacak yapı



Metal

## Montaj tipi



Mevcut manşon

## Derecelendirmeler ve sertifikalar

### Yangın

- IMO 2010 FTP Koduna göre A-SINIFI
- EN 13501 standardına göre E/EI derecesi
- UL 1479 standardına göre F/T derecesi
- IMO 2010 FTP Code + HC-yangın yük eğrisine göre H-SINIFI
- ISO 22899-1 ve OTI 95634'e göre jet yangını

### Sızdırmazlık

- Gaz: 2,67 Bar (katastrofik)
- Su: 4 bar (katastrofik)

### Destekler

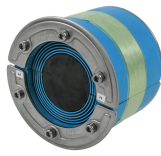
- Elektromanyetik ekranlama
- Potansiyel eşleme

## Yalıtım elemanı verileri

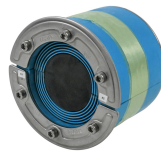
### Yalıtım elemanları



Kayganlaştırıcı

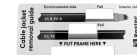


RS PE yalıtım malzemesi



RS ES yalıtım malzemesi

### Aksesuarlar



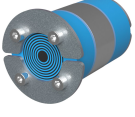
Aksesuarları ES ve BG

Ayrıntılı bilgi için lütfen [roxtec.com](https://www.roxtec.com) adresini ziyaret edin.

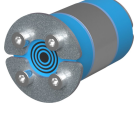


## Önceden yapılandırılmış geçiş kitleri

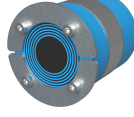
mm/kg



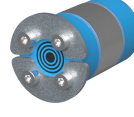
RS 50 PE AISI316



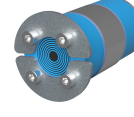
RS 25 ES AISI316



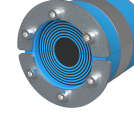
RS 68 PE AISI316



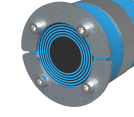
RS 25 PE AISI316



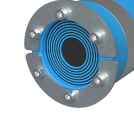
RS 43 ES AISI316



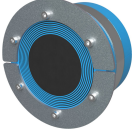
RS 75 PE AISI316



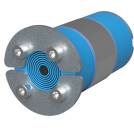
RS 68 ES AISI316



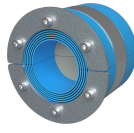
RS 75 ES AISI316



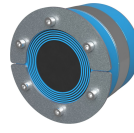
RS 125 PE AISI316



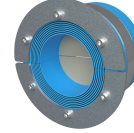
RS 43 PE AISI316



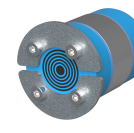
RS 100 ES AISI316  
WOC



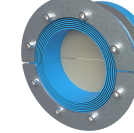
RS 100 ES AISI316



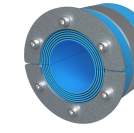
RS 125 ES AISI316 WOC



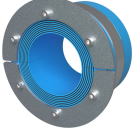
RS 31 ES AISI316



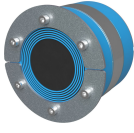
RS 150 ES AISI316 WOC



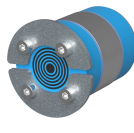
RS 100 PE AISI316  
WOC



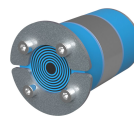
RS 125 PE AISI316 WOC



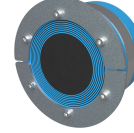
RS 100 PE AISI316



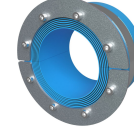
RS 31 PE AISI316



RS 50 ES AISI316



RS 125 ES AISI316



RS 150 PE AISI316 WOC

| Başlık                | Konfigürasyon   | Açıklık boyutları<br>Ø | Ağırlık | Madde Numarası |
|-----------------------|-----------------|------------------------|---------|----------------|
| RS 50 PE AISI316      | 1x (8.0-30.0)   | 50 - 52                | 0.32    | PRS0100501121  |
| RS 25 ES AISI316      | 1x (3.6-12.0)   | 25 - 26                | 0.04    | ERS0100251121  |
| RS 68 PE AISI316      | 1x (26.0-48.0)  | 68 - 70                | 0.5     | PRS0100681121  |
| RS 25 PE AISI316      | 1x (3.6-12.0)   | 25 - 26                | 0.04    | PRS0100251121  |
| RS 43 ES AISI316      | 1x (4.0-23.0)   | 43 - 45                | 0.24    | ERS0100431121  |
| RS 75 PE AISI316      | 1x (24.0-54.0)  | 75 - 77                | 0.6     | PRS0100751121  |
| RS 68 ES AISI316      | 1x (26.0-48.0)  | 68 - 70                | 0.5     | ERS0100681121  |
| RS 75 ES AISI316      | 1x (24.0-54.0)  | 75 - 77                | 0.6     | ERS0100751121  |
| RS 125 PE AISI316     | 1x (66.0-98.0)  | 125 - 127              | 1.6     | PRS0101251121  |
| RS 43 PE AISI316      | 1x (4.0-23.0)   | 43 - 45                | 0.24    | PRS0100431121  |
| RS 100 ES AISI316 WOC | 1x (48.0-70.0)  | 100 - 102              | 0.8     | ERS0001001121  |
| RS 100 ES AISI316     | 1x (48.0-70.0)  | 100 - 102              | 1       | ERS0101001121  |
| RS 125 ES AISI316 WOC | 1x (66.0-98.0)  | 125 - 127              | 1.2     | ERS0001251121  |
| RS 31 ES AISI316      | 1x (4.0-17.0)   | 31 - 32                | 0.11    | ERS0100311121  |
| RS 150 ES AISI316 WOC | 1x (93.0-119.0) | 150 - 152              | 1.6     | ERS0001501121  |
| RS 100 PE AISI316 WOC | 1x (48.0-70.0)  | 100 - 102              | 0.8     | PRS0001001121  |
| RS 125 PE AISI316 WOC | 1x (66.0-98.0)  | 125 - 127              | 1.2     | PRS0001251121  |
| RS 100 PE AISI316     | 1x (48.0-70.0)  | 100 - 102              | 1       | PRS0101001121  |
| RS 31 PE AISI316      | 1x (4.0-17.0)   | 31 - 32                | 0.06    | PRS0100311121  |
| RS 50 ES AISI316      | 1x (8.0-30.0)   | 50 - 52                | 0.32    | ERS0100501121  |
| RS 125 ES AISI316     | 1x (66.0-98.0)  | 125 - 127              | 1.6     | ERS0101251121  |
| RS 150 PE AISI316 WOC | 1x (93.0-119.0) | 150 - 152              | 1.6     | PRS0001501121  |



The product information provided by Roxtec does not release the purchaser of the Roxtec system, or part thereof, from the obligation to independently determine the suitability of the products for the intended process, installation and/or use.

Roxtec gives no guarantee for the Roxtec system or any part thereof and assumes no liability for any loss or damage whatsoever, whether direct, indirect, consequential, loss of profit or otherwise, occurred or caused by the Roxtec systems or installations containing components not manufactured by an authorized manufacturer and/or occurred or caused by the use of the Roxtec system in a manner or for an application other than for which the Roxtec system was designed or intended.

Roxtec expressly excludes any implied warranties of merchantability and fitness for a particular purpose and all other express or implied representations and warranties provided by statute or common law. User determines suitability of the Roxtec system for intended use and assumes all risk and liability in connection therewith. In no event shall Roxtec be liable for indirect, consequential, punitive, special, exemplary or incidental damages or losses.

The Roxtec products are offered and sold in accordance with the conditions of the Roxtec General Terms of Sales. The latest version of the Roxtec General Terms of Sales can be downloaded from <https://www.roxtec.com/en/about-us/about-roxtec/general-terms-of-sales/>

We reserve the right to make changes to the product and technical information without further notice. Any errors in print or entry are no claims for indemnity. The content of this publication is the property of Roxtec International AB and is protected by copyright.

This document was generated on: 2024-04-26